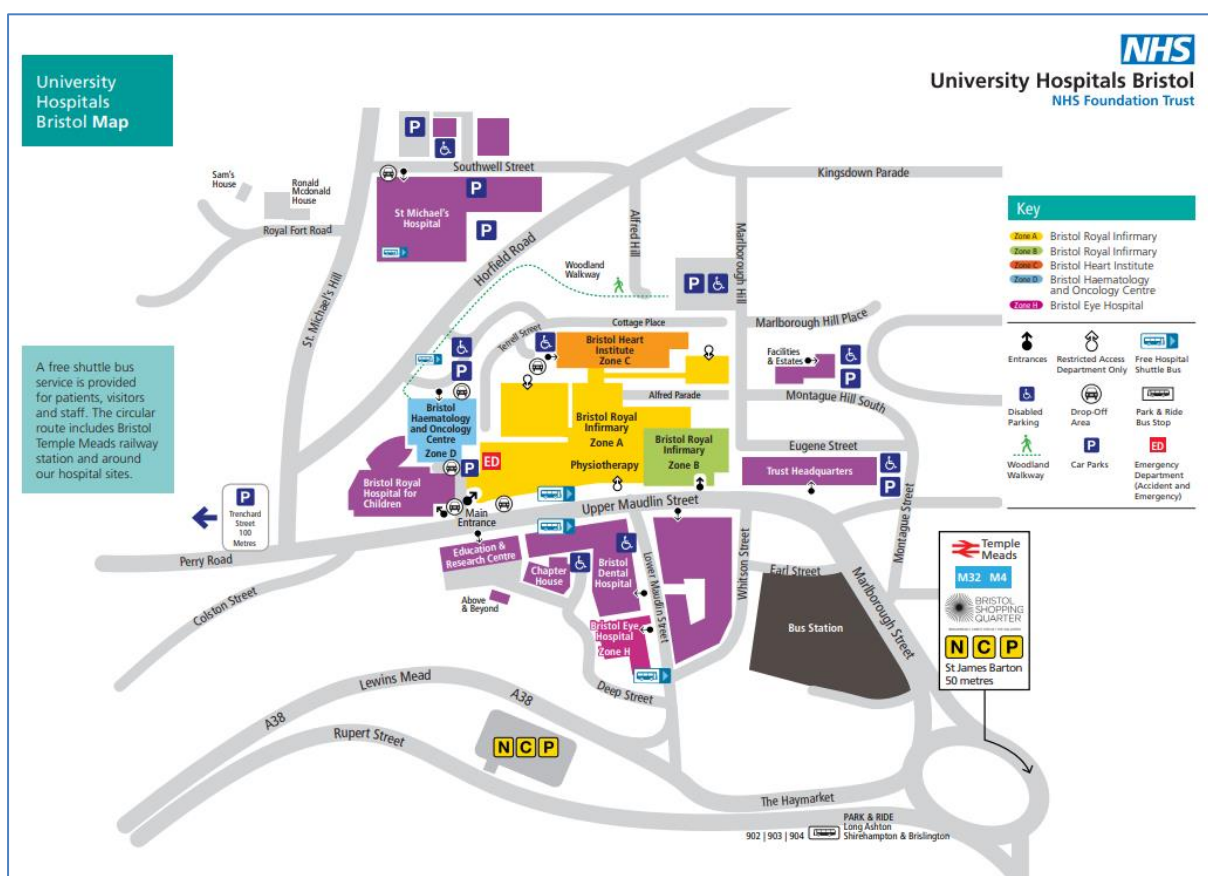
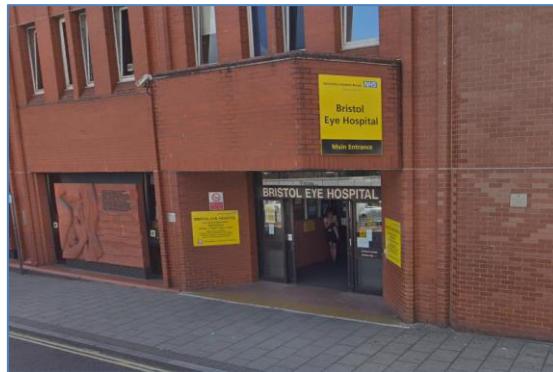


Bristol Eye Hospital



© Map University Hospitals Bristol NHS Foundation Trust 2020

Parking: The postcode is BS1 2LX. The entrance to the Eye Hospital is from Lower Maudlin Street. This street is one-way and traffic is directed to the left only at the T-junction with Marlborough Street. Drivers may stop outside the main entrance for a few minutes to drop patients off.

Parking is limited to a few pay and display meters on Lower Maudlin Street. Limited Pay and Display parking is available elsewhere on the Trust site but this is some distance away from BEH. There are several multi-storey car parks within a short walk, the nearest being the Rupert Street NCP. **Please note: Rupert Street carpark is not suitable if you are using a wheelchair.**

Pay & Display parking charges apply between 6am and 6pm daily:

Up to 2 hours = £3.40

Up to 4 hours = £5.40

Up to 8 hours = £12.00

Up to 12 hours = £15.00

If you are a Blue Badge holder, you will be able to park free of charge in any of our parking spaces (apart from the 15 minute drop-off spaces) as long as your Blue Badge is correctly displayed.

Public Transport: The bus station, 100 yards away from BEH, is served by First Group and National Express. First City Line run buses from both stations to the city centre.

The closest train station is Bristol Temple Meads. A free bus service, operated by UHBristol and the University, links Temple Meads Rail Station to BEH and other main Trust sites. The bus stops at the BEH main entrance and operates every 10-20 minutes between 6.30am to 6.30pm weekdays.